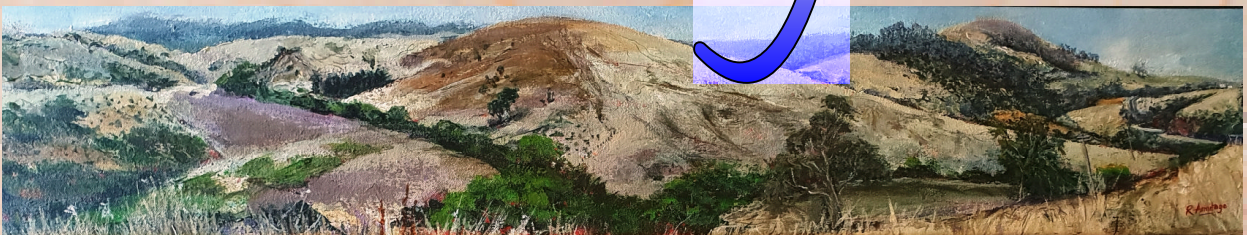




Lower Midlands Arts

Email; bassettcarolyn7@gmail.com
Mobile; 0412 903 944
website; www.greenpondsprogress.com

Lower Midlands Collection 2022



About The Lower Midlands Collection

Started in 2010 /2011 by members of the Greater Green Ponds Branch of Tasmanian Regional Arts, the Lower Midlands Collection is a project that supports artists of all disciplines who have lived or worked in the southern midlands, or artists who have created artworks that celebrate or describe it. It aims to tell the story of this area - roughly bounded by Tunbridge, Campania, Pontville and Bothwell - in a visual way.

Members realised that for generations there have been many fine artists and craftspeople living and working in the lower midlands whose work is largely hidden or lost to their community, partly because there is no community place where their endeavours can be viewed. They felt this 'loss to the community' ought to be rectified and so the collection was born.

So they devised this plan to gradually acquire works and lease them for display in public and private spaces throughout the region. In other words the 'gallery' will be school common rooms, business and government offices, banks, waiting rooms, or over the mantel in your dining room!

The first launch exhibited eight art works – paintings, prints, photography and one ceramic piece, which was gradually acquired from both established and emerging artists, by purchase and donation. It is a living collection—artists can remove any works they offer on loan, or exchange them. Other generous people donate works, and the Lower Midlands Art group purchase an artwork from Artlands annually. (When TRA closed its doors, GGP branch members became the Lower Midlands Arts)

Each work of art is registered and has a sign on it indicating that it is part of the Lower Midlands Collection. The lease fee is a modest \$50, which makes it possible for most residents or groups to enjoy a piece for 12 months. Each year, the works will be on show and available for re-hire. Artworks can be leased at the changeover function, or online at our website - [www.greenpondsprogress .com](http://www.greenpondsprogress.com)

Lower Midlands Arts is a group of people who enjoy many pursuits including craft workshops, garden and gallery tours. All members of the community are welcome to join, you don't have to be an artist.

President, Catherine Johnson	0438 591 138
Secretary, Carolyn Bassett	0412 903 944
Email, bassettcarolyn7@gmail.com	
Treasurer, Sandra Brown	0417 598 752

Banking details for the Lower Midlands Collection
BSB 067 101
A/C 10727426

Item 1

Chauncy Vale 1

Acrylic 2008

Jenny Young

Jenny is a well-known artist in Tasmania. She works and teaches from her studio in Sandy Bay alongside her husband Brian who is a retired doctor.

Both Brian and Jenny regularly paint en plein air in the midlands

This painting was purchased by the LMC



530mm x 680mm

Item 2

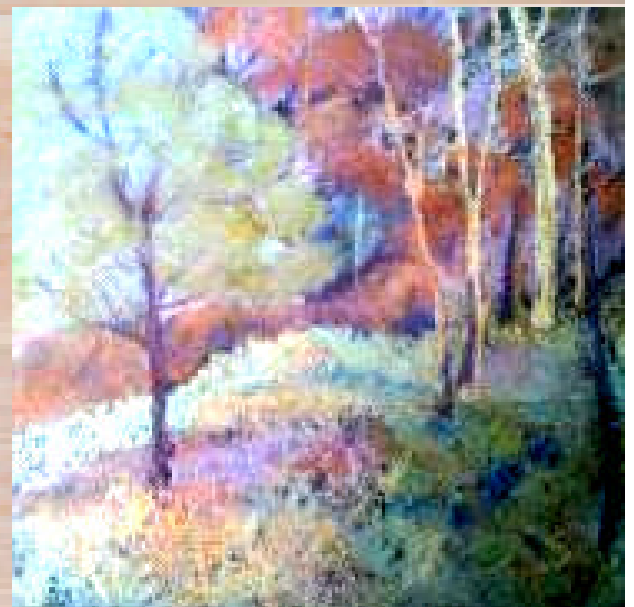
Bush at Chauncy Vale

Pastel 2008

Brian Young

Art for me is a constant challenge as I attempt to interpret the diverse Tasmanian landscape using a combination of hard and soft pastels. My work is of a semi-abstract nature, each painting begun en plein air to consolidate the overall composition.

Then, back in the studio, I work on colour and tone - both important aspects of my work.



415mm x 430mm

This painting was purchased by the LMC

Item 3

Boganvillainy

Ceramic 2008

Kim Foale

Kim is a ceramic artist who lives in Bagdad.

Her one - off original art pieces generally have an environmental story to them.

These shells have been kindly donated by the artist.



Item 4

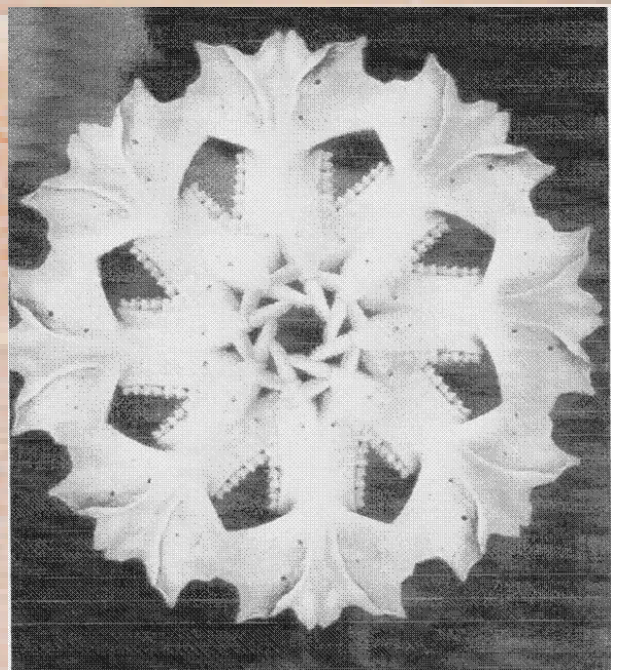
Wallaby Jaw Mandala

Digital type C print 2005

Garth Knight

Life, Death, Rebirth was a series of Mandala images that are digitally constructed from photographs of found natural objects.

The particular work in this collection was made from a wallaby jaw bone, found near Garth's original home at Stony Rise, Bagdad.



550mm x 560mm

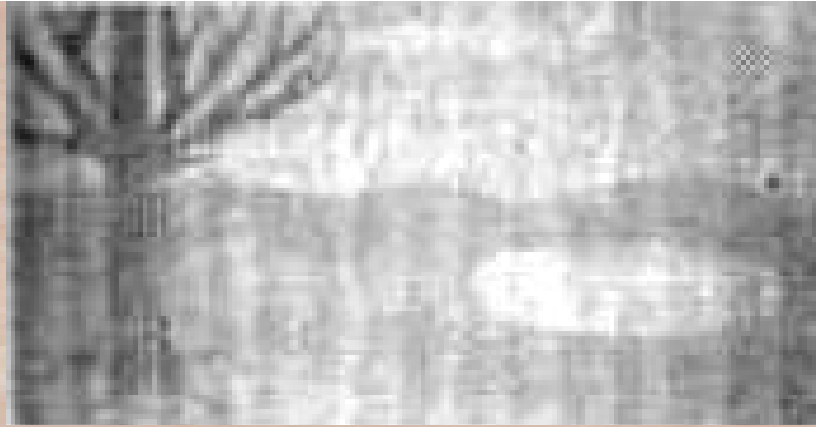
This digital print has been kindly donated by the Artist

Item 5

Der Teich

Woodcut 1997

Julia Harman (dec)



1020mm x 710mm

Julia was born in Sussex, England in 1966. In 1987 she graduated with a degree in Fine Art (printmaking major) from the university of Tasmania, Australia.

Julia spent many of her early years living in Bagdad where she explored her emerging interest in drawing and print making.

Julia was living and working in Berlin from 1994 until her death in 2009.

This artwork has been kindly donated by Chris and Kay Harman, Bagdad

Item 6

Burning Stumps

Hand-dyed wool rug

Jim Luck (dec)

Jim Luck's background was mainly in wool classing through which he has worked in many Interesting parts of Australia; but his searching mind led his life in some fascinating directions.

Later in life in Tasmanian he produced a series of hand dyed rugs for an exhibition at The Schoolhouse Gallery, Rosny.



930mm x 1240mm

This rug has been kindly donated by the Artist

Item 7

Alexander and Friends

Photograph 2010

Neville Shaw

The work titled **Alexander and Friends** is a photograph taken of four beetles noticed by chance on a native hop bush in the garden my partner and I made when we lived in Bagdad.



490mm x 365mm

Alexander was named after A. A. Milne's poem *Alexander Beetle*.

This photograph has been donated by the artist

Item 8

Tracing Silence 1

Charcoal, Graphite, chalk on paper 2020

Jenny Topfer

Jenny holds a BA (Hons) from the Australian National University and an MBA from the Australian Graduate School of Management.

She left Sydney in 2002 to pursue a full time career as an artist in Tasmania. She works from her studio on a quiet hill above the Mangalore valley in the Southern Midlands.

This artwork has been kindly loaned by the Artist



320mm x 420mm

Item 9

Kempton 1

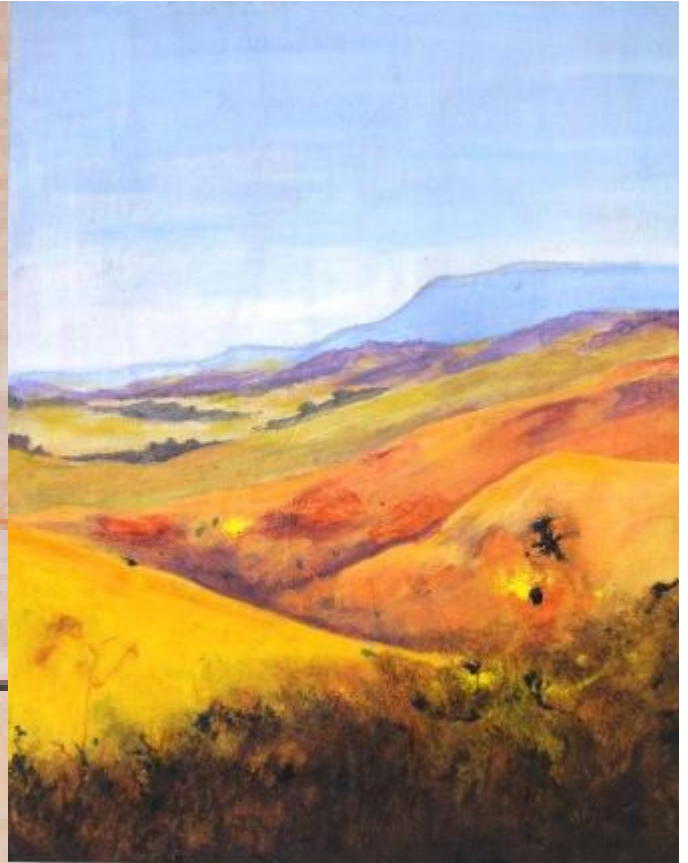
Mixed Media 2009

Nadine Wise (dec)

Nadine often visited the southern midlands when she took her family on Sunday afternoon drives.

In Kempton, when they drove down Sugarloaf Road, Nadine's two young grandsons would get out and search for sheep skulls along the disused Apsley rail track.

This painting has been purchased by the LMC



410mm x 510mm

Item 10

Midlands Spring

Acrylic on Canvas

Terrence Gough

OAM

1250mm x 940mm



Terry Gough is a well known Tasmania artist and retired teacher. This painting resulted from a number of quick sketches that concentrated on colour, line and tone.

The important touches have resulted from his interest in mark making where he has tried to capture the essence and simplicity of the subject.

This painting has been kindly loaned to LMC by the Artist

Item 11

Picnic in the Pattern

Digital print No.1/ 6 2015 of original water colour painting on cartridge paper scroll

Chris Harman

Chris has studied the Tasmanian Aboriginal people and their association with the island. They were a people integrated into landscape. They would have explained their understanding to one another on rock walls now deep below the sea.

This painting 'Picnic in the Pattern' is based on his understanding of this process, that of part drawing and part supporting spoken word.

This print has been kindly donated to LMC by the Artist



400mm x 740mm

Item 12

Midlands Last Light

Oil on canvas 2003

Emily Smith

950mm x 750mm



In recent years I have been working from my home studio in Wynyard, producing landscapes and equine portraits for my own investigation as well as for private commissions.

This painting has been kindly donated by Joan and Bob Wilson, Bagdad

Item 13

On the Road to Isis

Acrylic 2012

Neville Shaw



530mm x 680mm

Neville's interest in art was fostered at High School by a keen art teacher. Earlier in his Career, Neville worked extensively in the graphic and commercial arts industry, which included starting up his own publishing business in Hobart.

Upon retirement, Neville and his partner continue their individual artistic careers and together are building a Japanese garden at their home in St Mary's, Tasmania

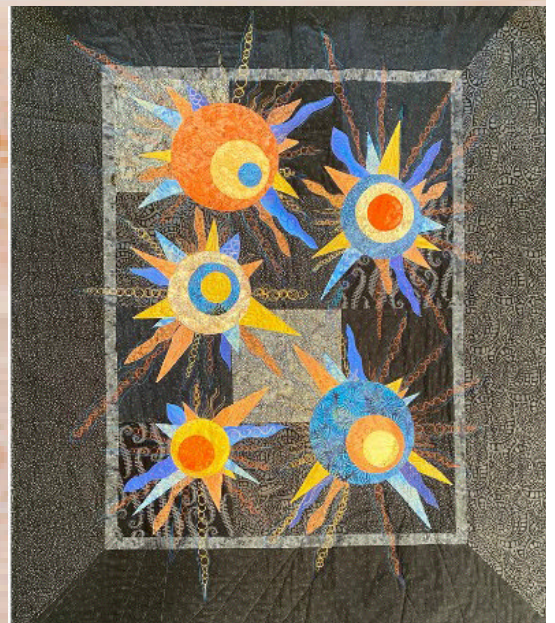
This painting has been kindly loaned to the LMC by Dot and Mike Evans, formerly from Tunbridge

Item 14

Midnight Hallucination

Fabric Art

Sherrie Jewson



1150mm x 1400mm

After studying at TAFE for two years, Sherrie has an advanced understanding of construction techniques.

Sherrie's exquisite quilts include mixed media such as ink, pencils, fabric paint, pearlex powders and free motion quilting on a domestic machine with a long arm quilter.

This fabric- painting has kindly been donated by the artist.

Item 15

Bowl made from Tasmanian Blackwood and English Oak.

John Matthew

When John was 39 he walked into a bookshop and saw a magazine with a wooden coach and horses on the cover. He was intrigued by it and bought the Magazine. He then bought it regularly to teach himself woodwork.

John is solely self-taught...at the time of purchase, he hasn't even seen anyone use a lathe.

This bowl has been purchased by the LMC



Item 16

Bagdad Last Light

Acrylic 2014

Carolyn Bassett

Carolyn says her landscapes are indicative of place, she makes marks where she thinks they should be and she's quite free with the paint.



600mm x 600mm

She mainly uses a palette knife, a wide flat brush and rags...fingertips are good too.

She loves the southern midlands scenery, she could paint the hillside views again and again.

The painting has been kindly donated by the Artist

Item 17

Candelabra

Wrought Iron

Tim Johnson

Tim Johnson was born and grew up on his family's farm, Lauriston, in Kempton. Through farming Tim learnt to make and mend farm machinery. This in turn allowed him to begin using his welding skills to produce wrought iron candelabra, fire tongs and the like.

He then moved onto silver smithing and made jewellery for the ladies of the family.

This Artwork has been kindly loaned to LMC by the Artist



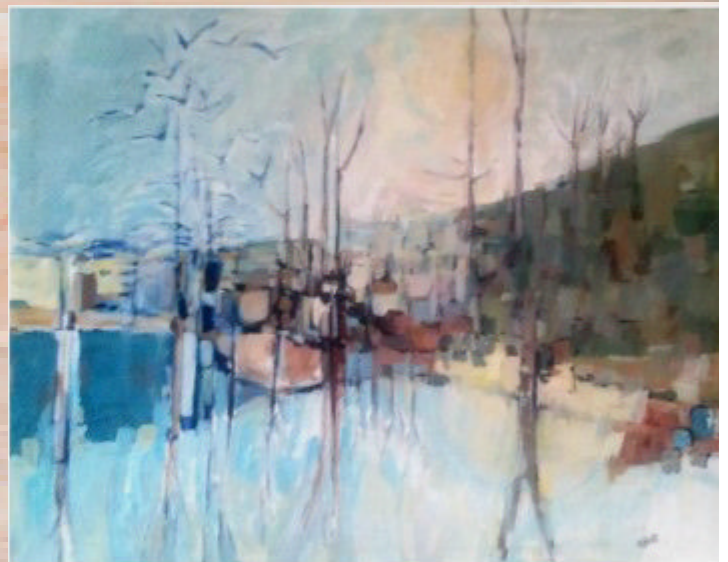
Item 18

King River

Acrylic

Merrilyn Batt

790mm x 630mm



Merrilyn was an art teacher in Tasmanian Secondary Schools until her retirement.

Describing this painting, Merrilyn said "I took the idea from a trip on the west coast years ago - around the King River where there was more evidence of environmental damage from mining then than now"

This painting has been kindly loaned to LMC by Mr Edwin Batt

Item 19

Butterflies

Felted Wall Hanging

Joan Wilson

This felted wall hanging is constructed from Tasmanian merino wool tops and commercial feltable wool, wet felted, and embellished with crochet and embroidery.

Joan Wilson comes from a long line of spinners, weavers, knitters and crocheters.

She has been fascinated with felting since doing a course on felt hat making.

300mm x 980mm

This felt artwork has been kindly donated to LMC by the artist



1970mm x 205mm

Item 20

Coal River Bends

Acrylic

Ruth Armitage

All my life I've loved drawing. After a career in computing, I moved to Tasmania with a young family in the 1990's. Here I owned and operated a framing business which exposed me to lots of beautiful fine art and taught me much about design, composition, colour and the importance of creativity in our lives.

After retiring several years ago I've thrown myself into my own art practice- plein air, still life, life drawing, Portraiture and digital drawing. The landforms, colours and quality of light of the Midlands I find particularly inspiring.

This Artwork has been purchased by LMC

Item 21

Hand Turned Bowl

Sassafras

Kevin Rayner

Kevin is a retired School Principal living in Bagdad, Tasmania.

He has worked in wood as a hobby all of his adult life, and is an accomplished furniture maker.

His hand turned bowls are all made of Tasmanian timbers and have sold interstate and internationally.

This bowl has been kindly donated to the collection by Bev Luck



Item 22

Morning Glow

Oil on Canvas

Tony Ryan

Tony is a respected artist winning many art prizes.

He had an interest in being creative, even from early childhood . This love of art never really died as he became older.

As his skills and confidence grew the thrill of seeing his paintings sell was always an ongoing motivating factor.

Two of the more enlightening moments would have to be; a Finalist in the 2006 John Glover Exhibition and winning the 2010 Wrest Point Art Award.

This painting was the People's Choice at Artlands 2016 and has been purchased by LMC



720mm x 520mm

Item 23

Ploughing 1906

Drawing 2008

Stephen Walker AM
(dec)



640mm x 500mm

Stephen Walker was an Australian sculptor for more than 65 years. He moved to Hobart from Victoria in 1948. He has 69 public works in Tasmania and all Australian states, as well as many works in private collections here and overseas.

The works capture Tasmania's connection with the sea, nature and Antarctica. Some of his best known works include such bronzes as the Bernacchi Tribute on the Hobart waterfront, the Abel Tasman fountain in Salamanca Square, Heading South at Victoria Dock, Tidal Pools at Sandy Bay and Miners Siding at Queenstown

This drawing has been purchased by the LMC

Item 24

Hutton Park Rear

Watercolour

Karen Marlowe



Karen works from a studio in Opossum Bay and paints in various mediums depending on the subject. She said, "Painting is my first love" She has won many art prizes internationally, interstate and locally and sells her work overseas as well as Australia wide.

In 1980 Karen began a quest to record as much rural domestic architecture as she could before it was destroyed or fell down with age. This painting is one of a number she has painted of 'Hutton Park' and when the ducks suddenly appeared out the back she 'just had to include them'

This painting has been purchased by the LMC

Item 25

Large Bowl –1976

Stoneware

Derek Smith (dec)



Master Ceramic craftsman, Derek Smith was born in England where he was trained as an art teacher and potter. Invited to teach at the Tasmanian School of Art in 1962, he introduced students to high fired stoneware and set up the Ceramics Department with high temperature kilns.

In 1973 Royal Doulton invited him to establish a craft Pottery studio at their Sydney Factory producing domestic stoneware. During this time he set up Blackfriar's studio and Gallery at Chippendale and by 1976 it became the largest of its kind in Australia. Derek's work is represented interstate and overseas

This stoneware bowl has been purchased by the LMC

Item 26

A Cold Snap

Watercolour

Anita Fry

Anita enjoys painting in monotone –especially indigo and this painting reminded Anita of the many frosty winters spent in Kempton when she lived and taught there.



415mm x 430mm

Anita enrolled in classes with Terry Gough and became addicted to watercolour, though now she is experimenting with abstract art in acrylic.

This painting has been purchased by the LMC

Item 27

By the Fence

Watercolour

Adrienne Charles

Apart from painting beautiful watercolours Adrienne has been designing and producing counted cross stitch kits as her business Nostalgia Tasmania since 1989.

The aim —
to promote the beauty of Tasmania.

She describes her work as 'tourism through craft'. Adrienne's designs have been enjoyed by many, and the kits have been posted world-wide.



435mm x 540mm

This painting has been purchased by the LMC

Item 28

Reedy Marsh Sheep

Acrylic

Aileen Gough

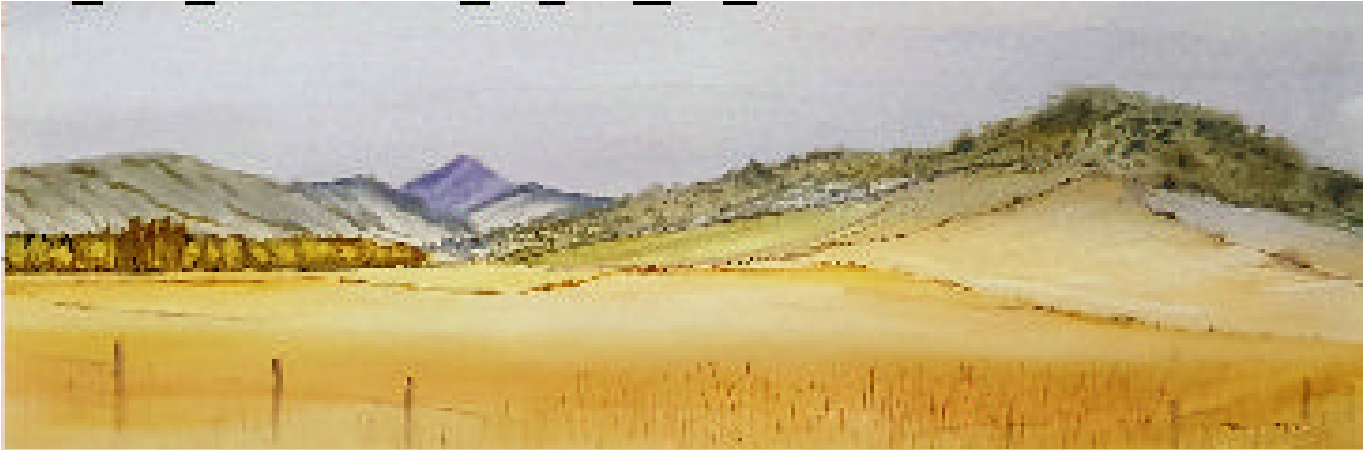
1220mm x 900mm



Aileen has trained in watercolour, oil and acrylic mediums at Launceston School of Art and also did three years of Commercial Art.

Aileen also takes part with the 'Art in Schools' program and has taught art to school children from the Bracknell and Deloraine State Schools, over the years. She lives in Devon Hills, near Launceston

This painting has been purchased by the LMC



960mm x 480mm

Item 29

View of Bagdad Valley from Glen Avon

Joan and Bob Wilson commissioned Tina to paint three views of their property, Glen Avon, in Bagdad.

Watercolour

Tina painted four to choose from, so they bought all four, and generously donated this one to the LMC.

Tina Terry